

Architect:  
Renato D'Eltonne Architects

Location:  
Hamilton Island, Queensland, Australia

Year:  
2011

Type of pool:  
private, indoor and outdoor

Size:  
116 sqm

Length x width:  
20.25 x 4.6 m

Depth:  
1.3 m

Photos:  
Francesca Giovanelli

Set high above the stunning Coral Sea on Hamilton Island, the overriding design objective of the home was for the wrap-around swimming pool to be a dramatic and generous element and to create a refreshing oasis. The pool instills a sense of simplicity with its crisp seamless infinity edge invisibly blending into the ocean and sky.

During the day, the reflective sheets of water mirror shifting patterns of sunlight and cloud formations creating moments of incredible beauty. By night the pool's artificial lighting provides a large illuminated surface casting sufficient soft lighting for the outdoor living

areas. The pool features two distinctive areas: the elongated lap pool situated in front of the living rooms and main bedroom is the central element with direct access – beckoning for an early morning dip or workout before the day begins. The channel system surrounding the island, accessed by diving under the bridge leads to the island steps and shaded poolside grotto – a perfect area for informal dining, napping or just chatting. On the central patio spectacular views can be enjoyed in total privacy on poolside recliners or on submerged seating integrated in the long tiled niche.

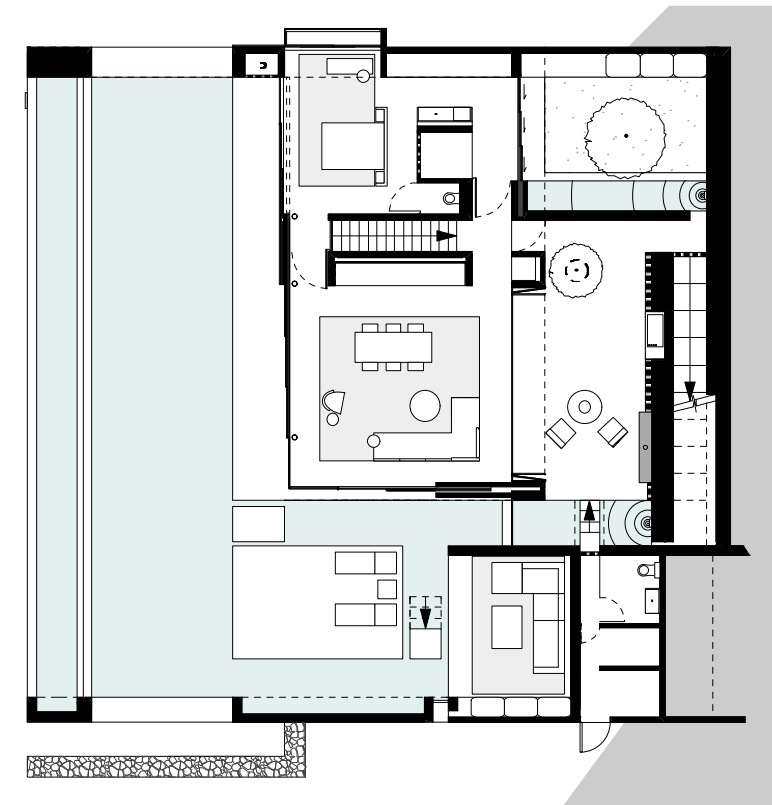


## Azuris, Australia





Infinity pool, floor plan, view of the pool island and covered relaxation area



Previous pages: living and dining area open to the pool, view of the infinity pool from the bedroom, this page: relaxation area, open living and dining space